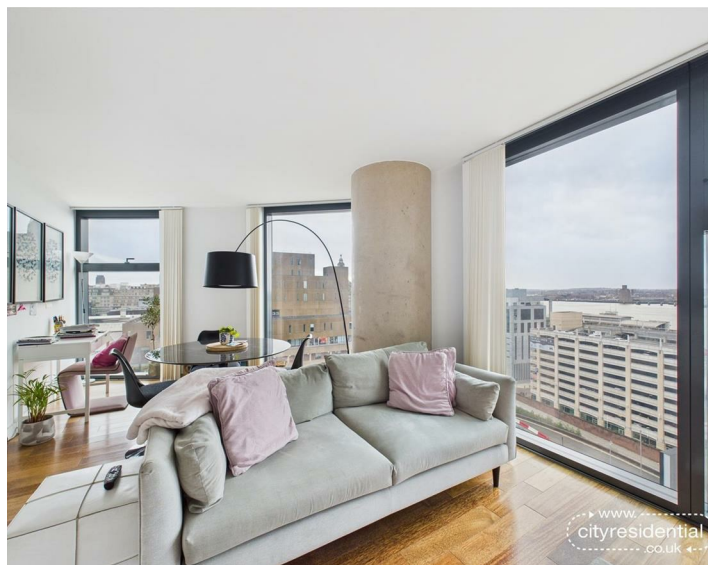


1002 West Tower, Liverpool, L3 9PE

Asking Price £230,000 Leasehold

www.cityresidential.co.uk





About the Property

Looking for an executive apartment within a vibrant environment of leisure, business and culture? Then this this spectacular 10th floor apartment is a must see!

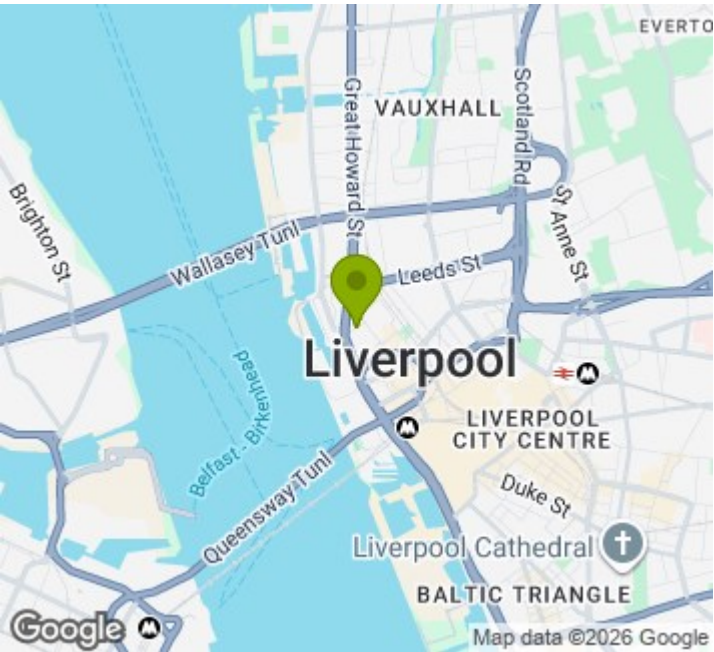
Located within one of the most sought after buildings in the city, the exclusive West Tower development is situated on Brook Street within the ever popular Business District of Liverpool City Centre. Offering close proximity to many of the city's local amenities, including bars restaurants and historical culture.

The accommodation which is tastefully presented throughout briefly comprises; entrance hall, living/dining room with floor to ceiling windows, a modern fully fitted kitchen, a master bedroom with fitted wardrobes and en-suite shower room, a further double bedroom and a separate family bathroom.

The prestigious development also benefits from 24/7 concierge service and a secure allocated car parking space.

We expect high demand for this property, so book early to avoid disappointment.

- Executive two bedroom apartment
- Panoramic views
- 24/7 concierge
- Secure allocated parking
- Pristine condition
- Sought after Business District location



Energy Efficiency Rating

	Current	Potential
Very energy efficient - lower running costs		
(92 plus) A		
(81-91) B	84	84
(69-80) C		
(55-68) D		
(39-54) E		
(21-38) F		
(1-20) G		
Not energy efficient - higher running costs		
England & Wales	EU Directive 2002/91/EC	

